

## ACTION PLAN 1

Action plan

Coordinate with Navigator American Cancer Society  
(800)- 227-2345.

State Cancer plan.

National breast cancer and cervical cancer detection  
program

## ACTION PLAN 2

Problems: legislators don't know what is available/agencies are prohibited/ discouraged from communicating with lawmakers

American cancer society annual report: "how do you measure up?"

- Medical schools/ hospitals, employers, community, healthcare providers (leaders), DOI/ Insurance Institute, Advocates, Key Legislators, Fiscal, Health, Public policy

Small group discussions:

- community, neighborhood, churches, public hearings w/ community

Vulnerable populations:

- Native Americans, rural, uninsured/ underinsured, under educated, poor, women, transient/homeless

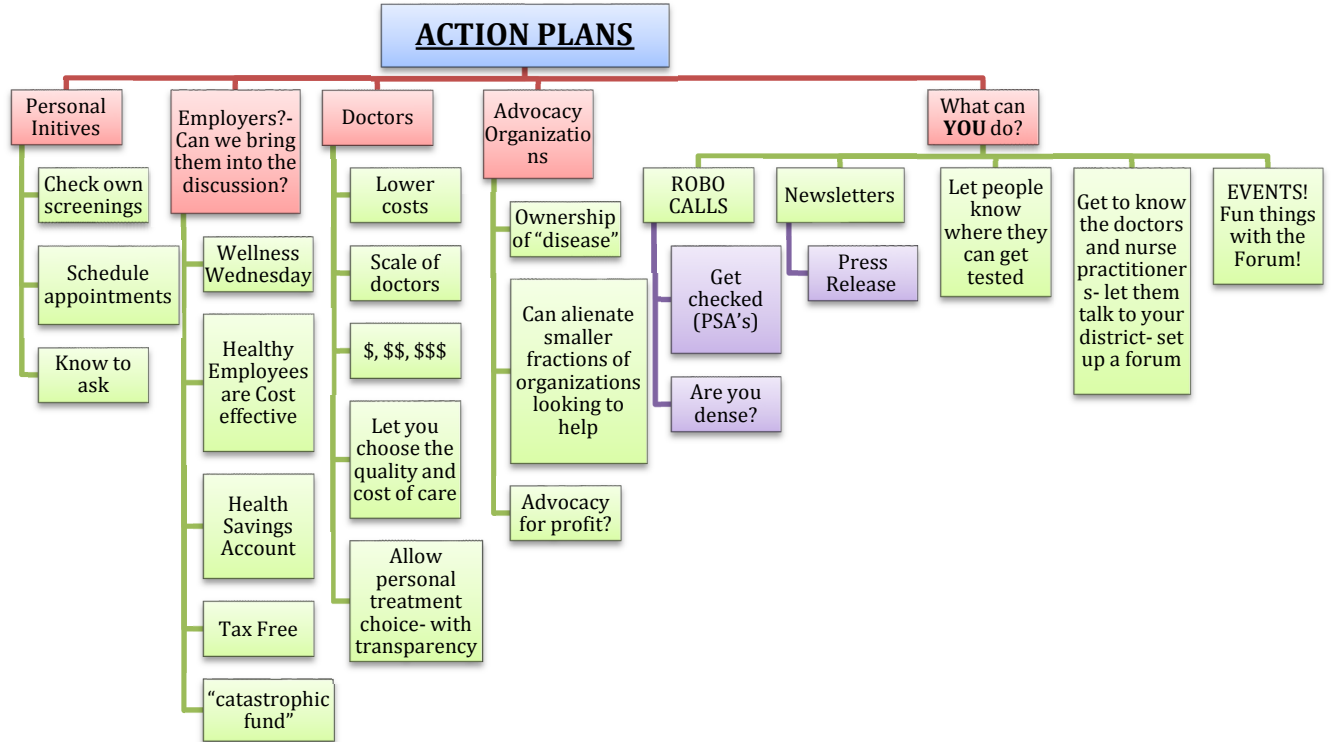
Barriers:

- Language, transportation, Number of providers, lack of insurance, adequate coverage, childcare

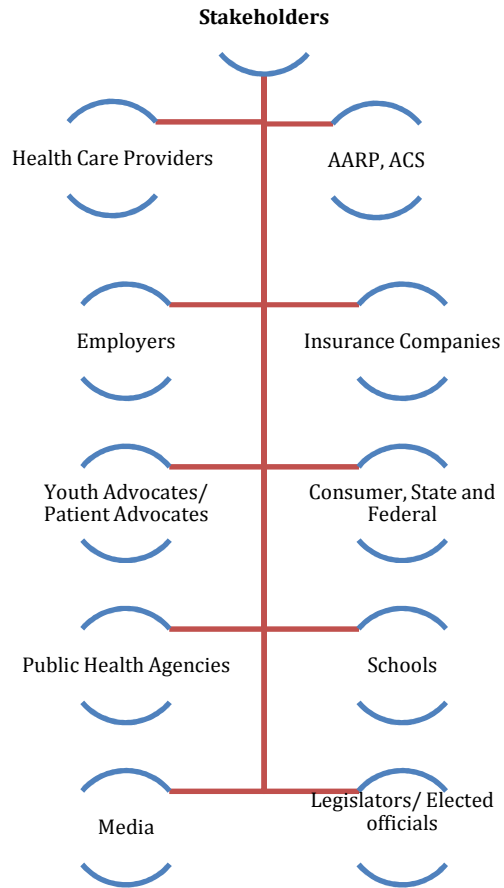
Improve:

- Strong social infrastructure, mobile units

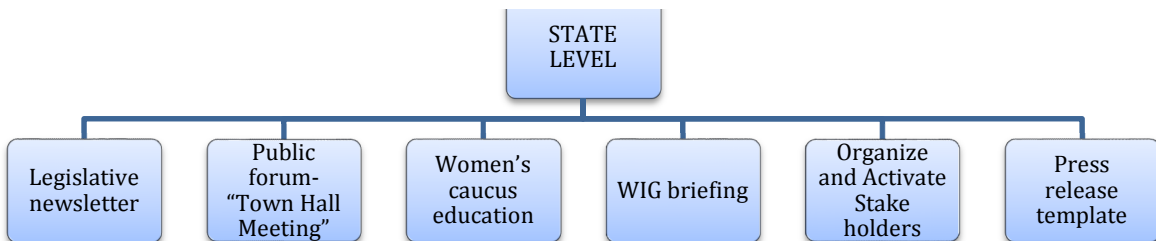
# ACTION PLAN 3



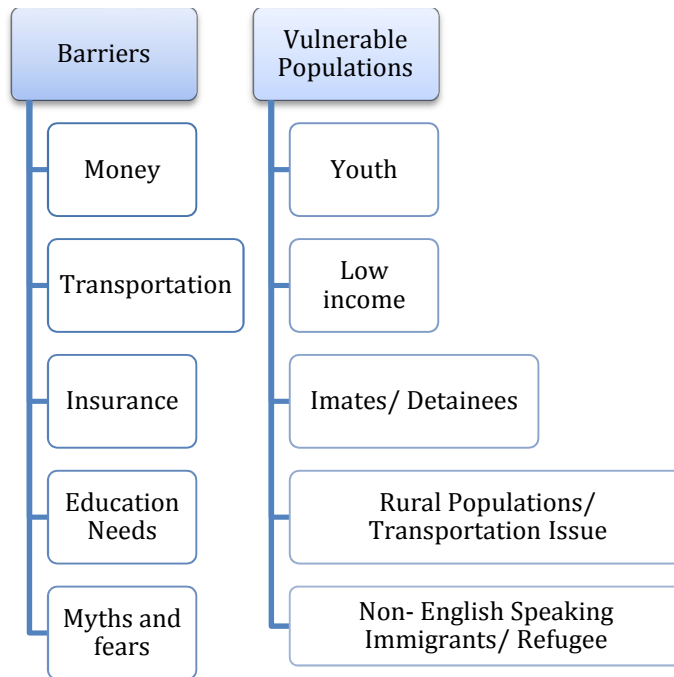
## STAKEHOLDERS



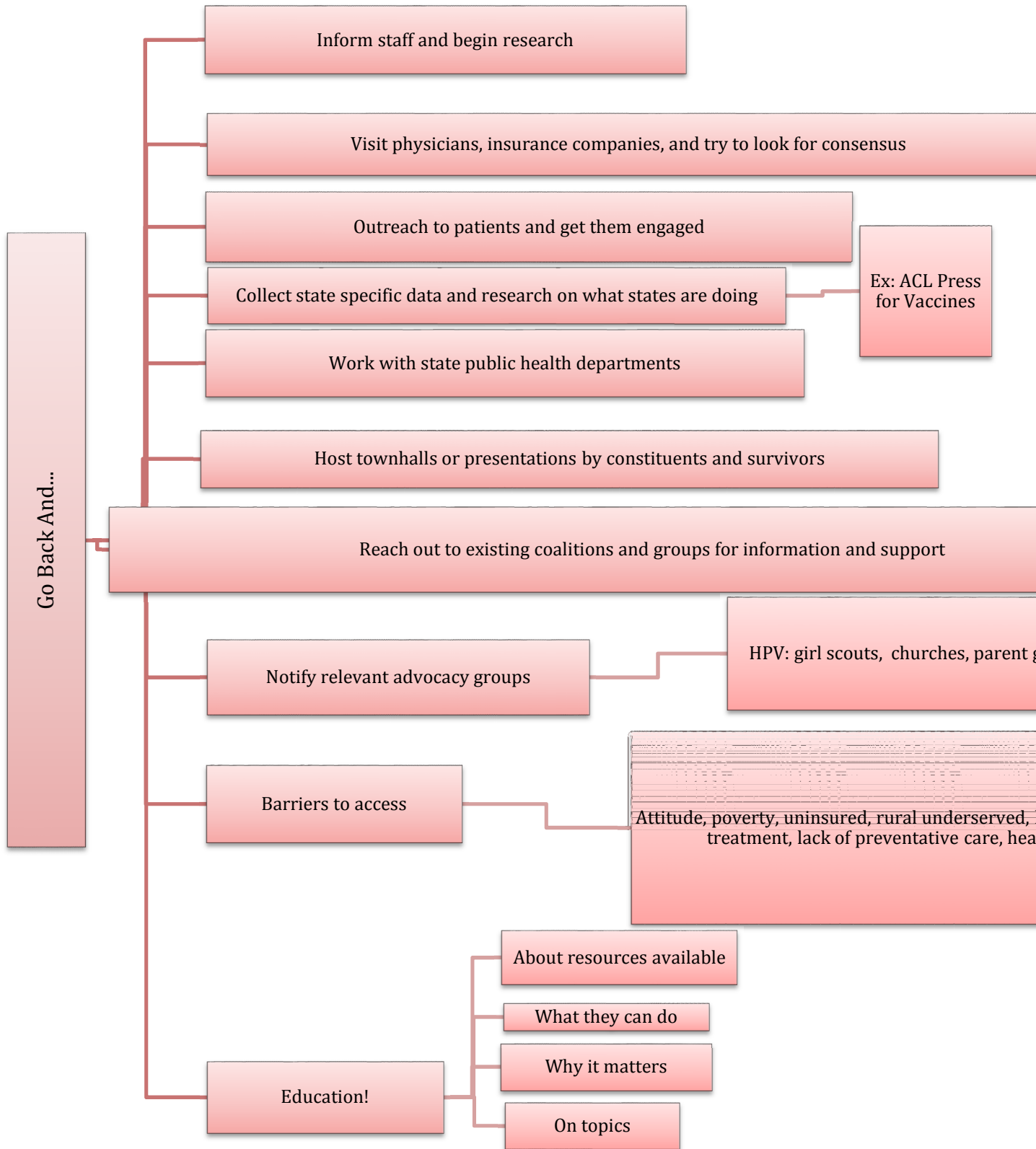
## STATE LEVEL



BARRIERS & VULNERABLE  
POPULATIONS



GO BACK AND...



# PROGRAMS

