

UNEMPLOYMENT STATISTICS ON OLDER AMERICANS

Prepared by Richard W. Johnson and Corina Mommaerts

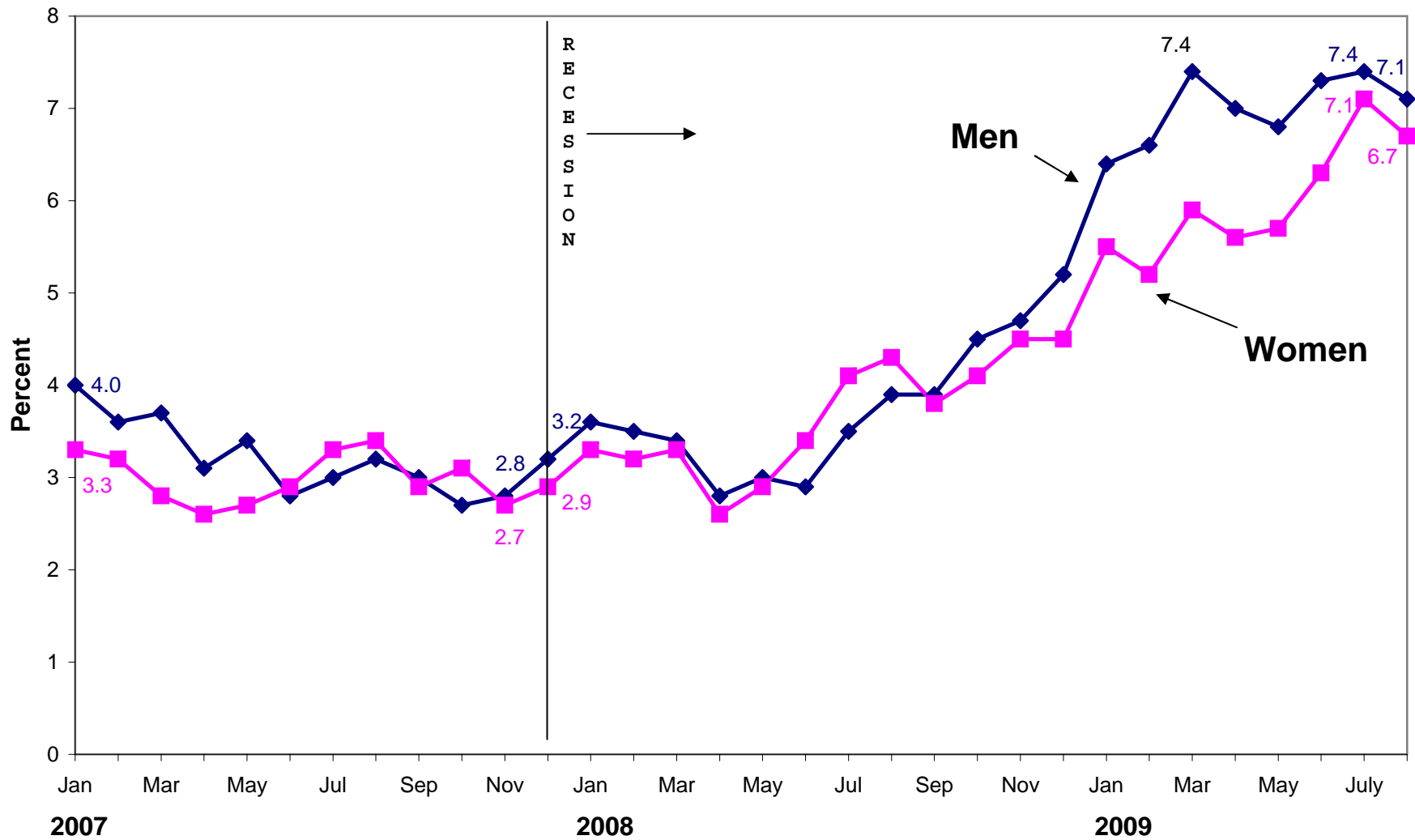
Charts

1. Unemployment Rates for Men and Women Age 55-64, Jan. 2007 to August 2009 (%)
(not seasonally adjusted)
2. Unemployment Rates for Men and Women Age 65+, Jan. 2007 to August 2009 (%)
(not seasonally adjusted)
3. Male Unemployment Rates at Age 55+, by Education, Nov. 2007 to July 2009 (%)
(not seasonally adjusted)
4. Female Unemployment Rates at Age 55+, by Education, Nov. 2007 to July 2009 (%)
(not seasonally adjusted)
5. Male Unemployment Rates at Age 55+, by Race and Ethnicity, Nov. 2007 to July 2009 (%)
(not seasonally adjusted)
6. Female Unemployment Rates at Age 55+, by Race and Ethnicity, Nov. 2007 to July 2009 (%)
(not seasonally adjusted)

Tables

1. Monthly Unemployment Rates, by Sex and Age, January 2007 to August 2009 (%)
(not seasonally adjusted)
2. Monthly Unemployment Rates, by Sex and Age, January 2007 to August 2009 (%)
(seasonally adjusted)
3. Monthly Unemployment Rates, by Sex and Education, Age 55+, November 2007 to July 2009 (%)
(not seasonally adjusted)
4. Monthly Unemployment Rates, by Sex and Race and Ethnicity, Age 55+, November 2007 to July 2009 (%)
(not seasonally adjusted)

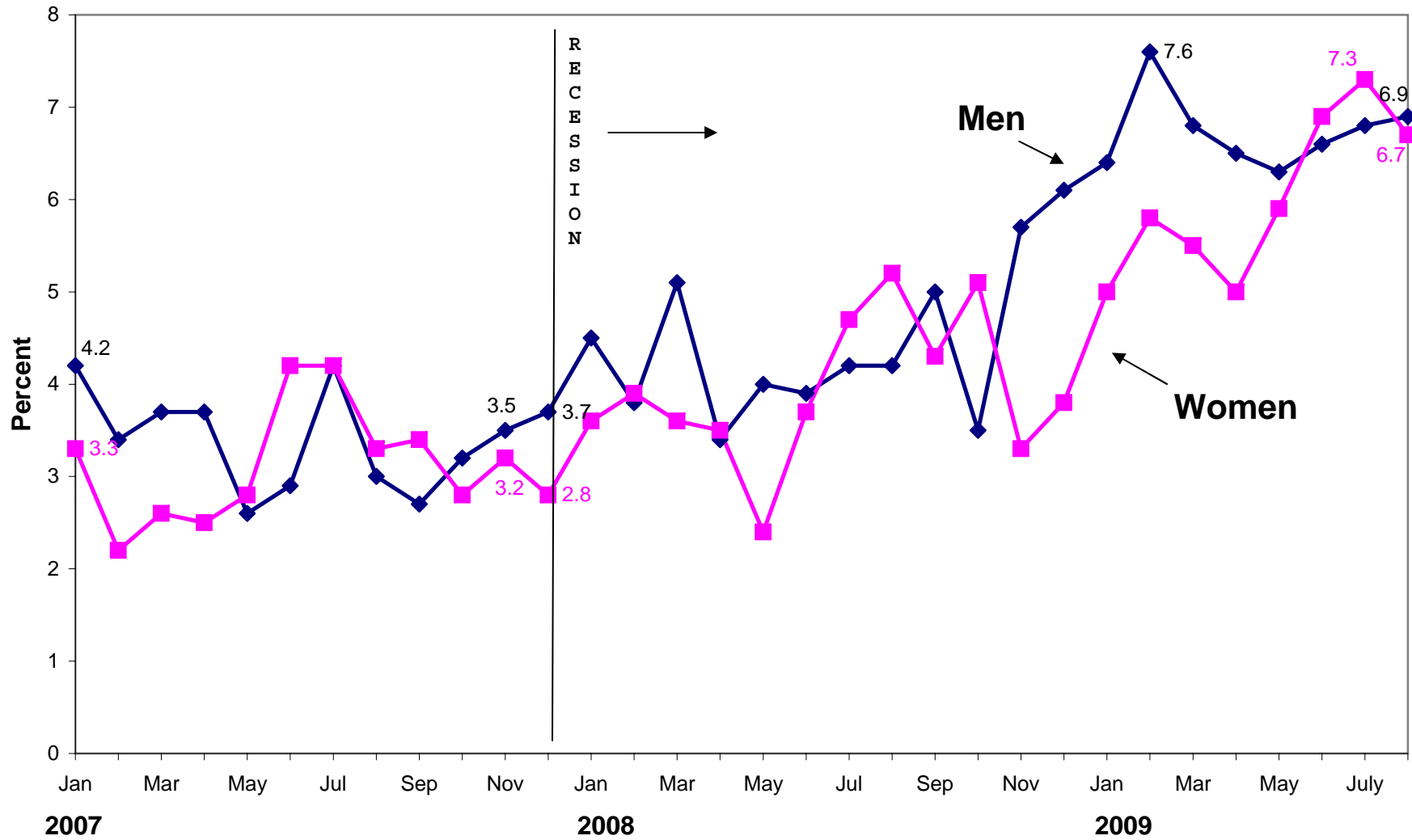
Unemployment Rates for Men and Women Age 55–64, Jan. 2007 to August 2009 (%)
(not seasonally adjusted)



Source: Bureau of Labor Statistics (2009).

Note: The unemployment rate is the number of adults who are out of work and who looked for work at some point over the past four weeks, divided by the number of adults in the labor force (employed and unemployed).

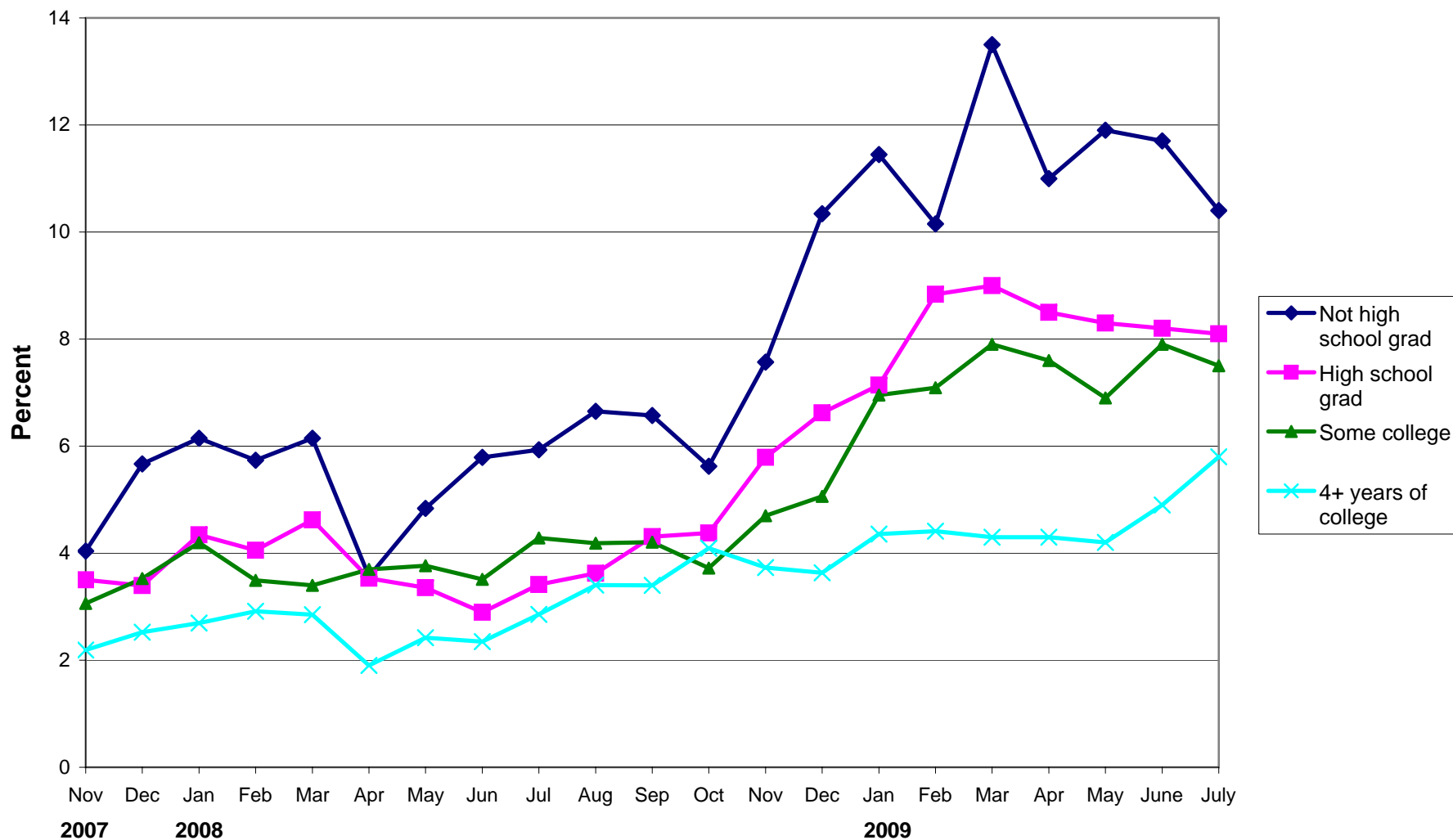
Unemployment Rates for Men and Women Age 65+, Jan. 2007 to August 2009 (%)
(not seasonally adjusted)



Source: Bureau of Labor Statistics (2009).

Note: The unemployment rate is the number of adults who are out of work and who looked for work at some point over the past four weeks, divided by the number of adults in the labor force (employed and unemployed).

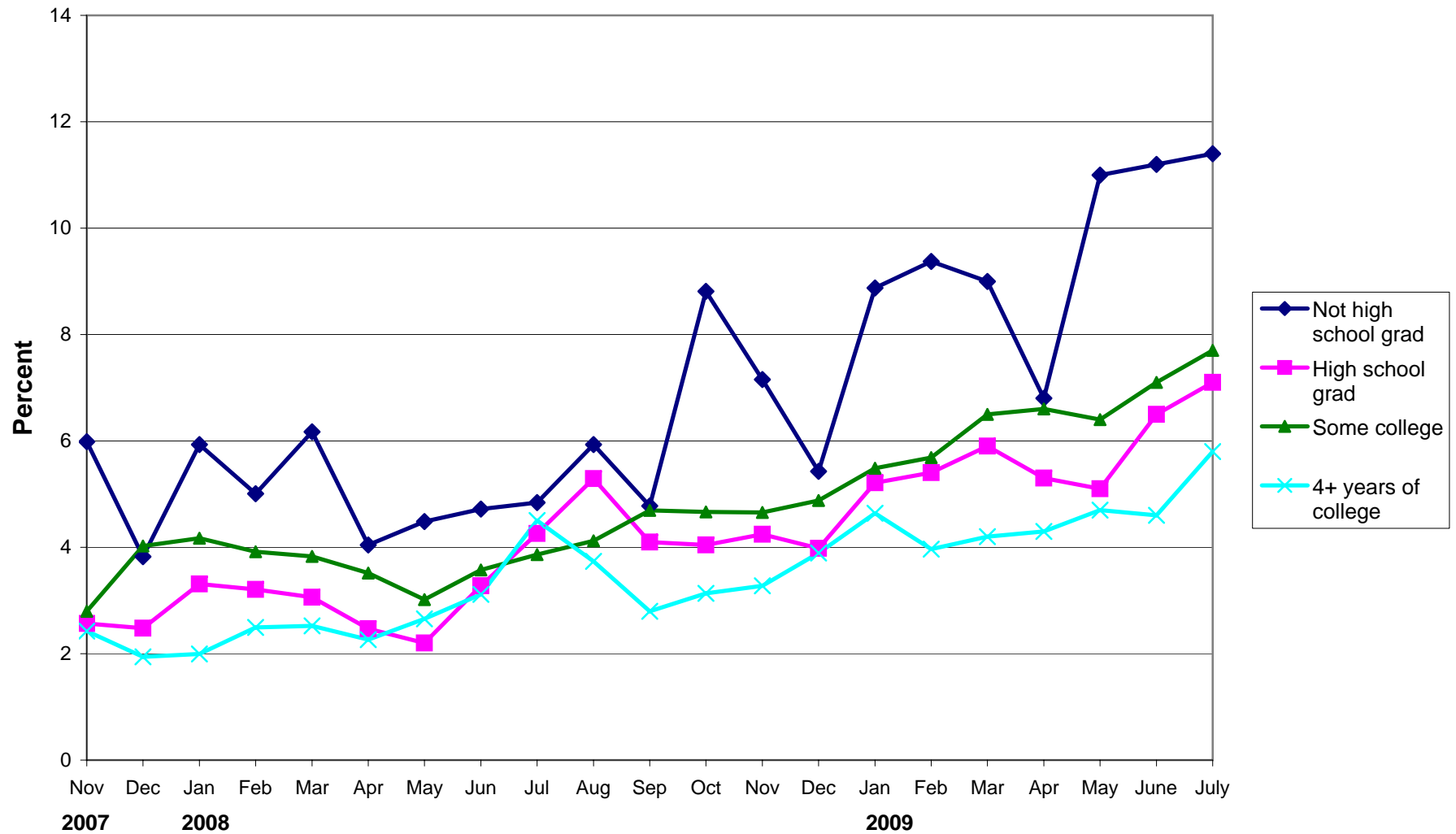
Male Unemployment Rates at Age 55+, by Education, Nov. 2007 to July 2009 (%)
(not seasonally adjusted)



Source: Urban Institute Retirement Policy Program estimates from the Current Population Survey.

Note: The unemployment rate is the number of adults who are out of work and who looked for work at some point over the past four weeks, divided by the number of adults in the labor force (employed and unemployed).

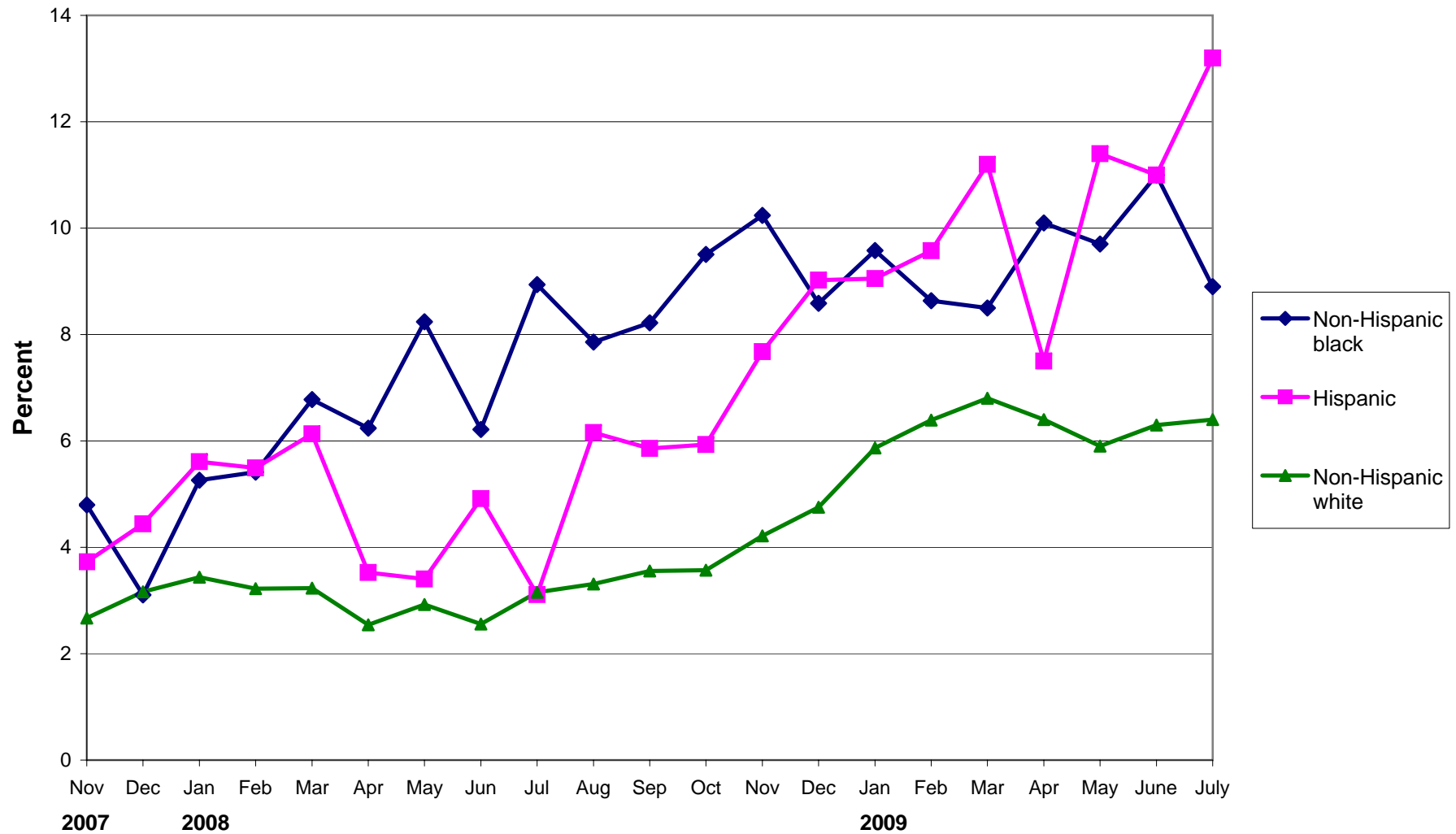
Female Unemployment Rates at Age 55+, by Education, Nov. 2007 to July 2009 (%)
(not seasonally adjusted)



Source: Urban Institute Retirement Policy Program estimates from the Current Population Survey.

Note: The unemployment rate is the number of adults who are out of work and who looked for work at some point over the past four weeks, divided by the number of adults in the labor force (employed and unemployed).

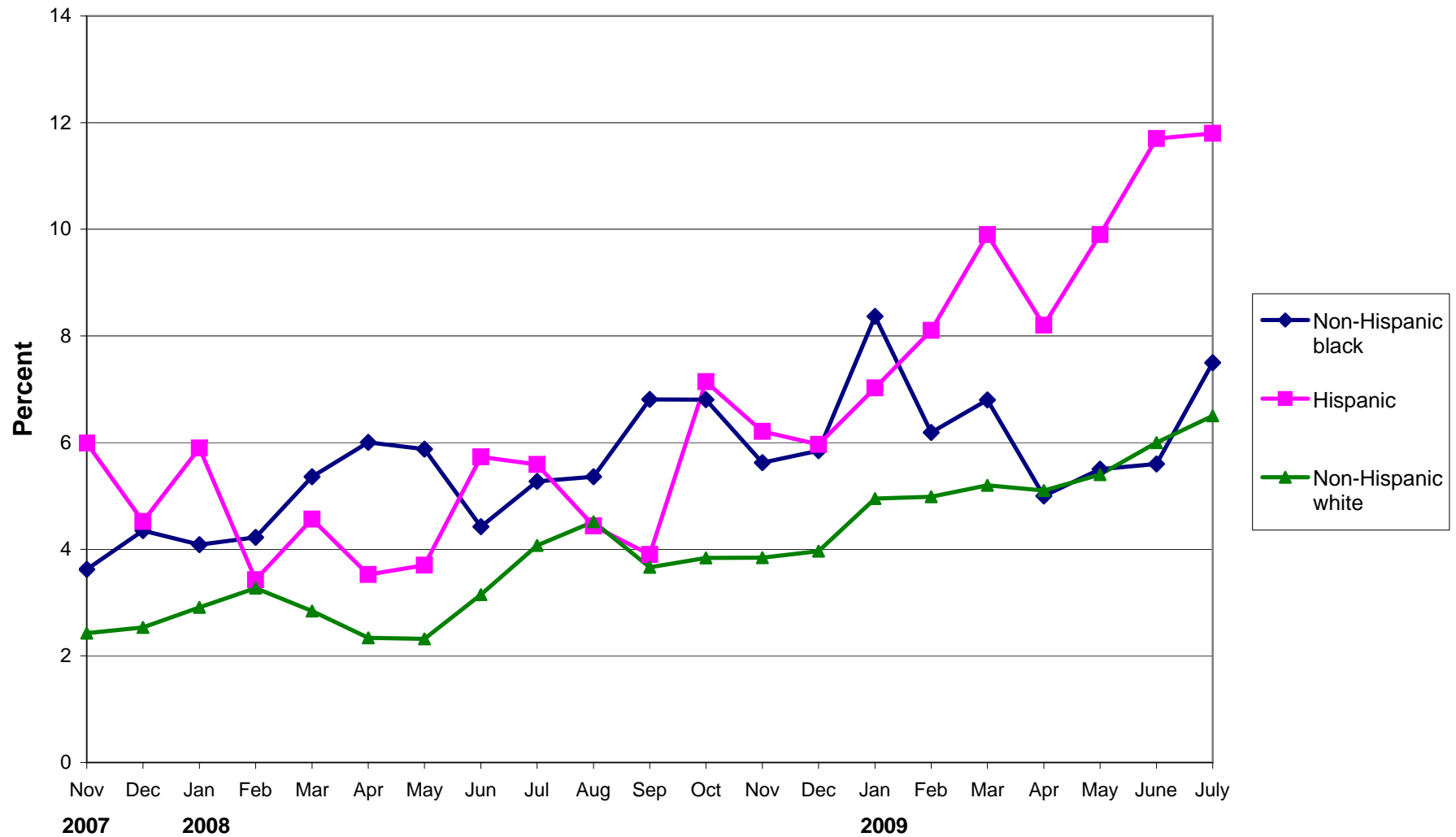
Male Unemployment Rates at Age 55+, by Race and Ethnicity, Nov. 2007 to July 2009 (%)
(not seasonally adjusted)



Source: Urban Institute Retirement Policy Program estimates from the Current Population Survey.

Note: The unemployment rate is the number of adults who are out of work and who looked for work at some point over the past four weeks, divided by the number of adults in the labor force (employed and unemployed).

Female Unemployment Rates at Age 55+, by Race and Ethnicity, Nov. 2007 to July 2009 (%)
(not seasonally adjusted)



Source: Urban Institute Retirement Policy Program estimates from the Current Population Survey.

Note: The unemployment rate is the number of adults who are out of work and who looked for work at some point over the past four weeks, divided by the number of adults in the labor force (employed and unemployed).

Monthly Unemployment Rates, by Sex and Age, January 2007 to August 2009 (%)
(not seasonally adjusted)

Year	Month	25-54			55+			55-64			65+		
		All	Men	Women	All	Men	Women	All	Men	Women	All	Men	Women
2007	Jan	4.1	4.4	3.8	3.7	4.0	3.3	3.7	4.0	3.3	3.8	4.2	3.3
	Feb	4.1	4.6	3.6	3.3	3.5	3.0	3.4	3.6	3.2	2.9	3.4	2.2
	Mar	3.8	4.1	3.5	3.3	3.7	2.8	3.3	3.7	2.8	3.2	3.7	2.6
	Apr	3.5	3.6	3.5	2.9	3.2	2.5	2.8	3.1	2.6	3.1	3.7	2.5
	May	3.4	3.3	3.5	2.9	3.2	2.7	3.0	3.4	2.7	2.6	2.6	2.8
	Jun	3.5	3.3	3.8	3.0	2.9	3.2	2.9	2.8	2.9	3.5	2.9	4.2
	Jul	3.9	3.5	4.4	3.4	3.3	3.5	3.2	3.0	3.3	4.2	4.2	4.2
	Aug	3.7	3.2	4.2	3.2	3.1	3.4	3.3	3.2	3.4	3.1	3.0	3.3
	Sep	3.6	3.2	3.9	3.0	3.0	3.0	3.0	3.0	2.9	3.1	2.7	3.4
	Oct	3.6	3.4	3.7	2.9	2.8	3.0	2.9	2.7	3.1	3.0	3.2	2.8
	Nov	3.7	3.5	3.9	2.9	2.9	2.8	2.7	2.8	2.7	3.4	3.5	3.2
	Dec	4.0	4.2	3.8	3.1	3.3	2.9	3.0	3.2	2.9	3.3	3.7	2.8
2008	Jan	4.4	4.7	4.0	3.6	3.8	3.4	3.5	3.6	3.3	4.1	4.5	3.6
	Feb	4.3	4.7	4.0	3.5	3.6	3.3	3.4	3.5	3.2	3.9	3.8	3.9
	Mar	4.5	4.8	4.1	3.6	3.8	3.4	3.3	3.4	3.3	4.4	5.1	3.6
	Apr	4.1	4.3	3.9	2.9	2.9	2.8	2.7	2.8	2.6	3.5	3.4	3.5
	May	4.1	4.1	4.1	3.0	3.3	2.8	3.0	3.0	2.9	3.3	4.0	2.4
	Jun	4.4	4.3	4.5	3.3	3.1	3.4	3.1	2.9	3.4	3.8	3.9	3.7
	Jul	4.7	4.7	4.8	3.9	3.7	4.3	3.8	3.5	4.1	4.4	4.2	4.7
	Aug	5.1	4.7	5.5	4.2	4.0	4.5	4.1	3.9	4.3	4.7	4.2	5.2
	Sep	4.9	5.1	4.7	4.0	4.2	3.9	3.8	3.9	3.8	4.7	5.0	4.3
	Oct	5.2	5.2	5.1	4.3	4.2	4.3	4.3	4.5	4.1	4.2	3.5	5.1
	Nov	5.6	5.8	5.3	4.6	4.9	4.3	4.6	4.7	4.5	4.6	5.7	3.3
	Dec	6.4	7.2	5.4	4.9	5.4	4.3	4.9	5.2	4.5	5.1	6.1	3.8
2009	Jan	7.7	8.9	6.3	5.9	6.4	5.4	6.0	6.4	5.5	5.7	6.4	5.0
	Feb	8.2	9.6	6.5	6.1	6.8	5.3	5.9	6.6	5.2	6.8	7.6	5.8
	Mar	8.3	9.7	6.7	6.6	7.3	5.8	6.7	7.4	5.9	6.2	6.8	5.5
	Apr	7.8	9.0	6.5	6.2	6.9	5.4	6.3	7.0	5.6	5.8	6.5	5.0
	May	8.0	9.0	6.8	6.3	6.7	5.8	6.3	6.8	5.7	6.1	6.3	5.9
	June	8.2	8.9	7.3	6.8	7.2	6.4	6.8	7.3	6.3	6.8	6.6	6.9
	July	8.4	8.9	7.8	7.2	7.2	7.1	7.2	7.4	7.1	7.0	6.8	7.3
	August	8.5	9.0	7.9	6.9	7.0	6.7	6.9	7.1	6.7	6.8	6.9	6.7

Source: Bureau of Labor Statistics (2009).

Note: The unemployment rate is the number of adults who are out of work and who looked for work at some point over the past four weeks, divided by the number of adults in the labor force (employed and unemployed). The shaded area indicates recessionary months, as determined by the National Bureau of Economic Research.

Monthly Unemployment Rates, by Sex and Age, January 2007 to August 2009 (%)
(seasonally adjusted)

Year	Month	All			25-54			55+	
		All	Men	Women	All	Men	Women	All	Men*
2007	Jan	4.6	4.7	4.5	3.7	3.7	3.7	3.3	3.4
	Feb	4.5	4.7	4.3	3.8	3.9	3.6	3.1	3.1
	Mar	4.4	4.5	4.3	3.5	3.5	3.5	3.1	3.3
	Apr	4.5	4.6	4.4	3.6	3.5	3.7	3.1	3.3
	May	4.5	4.6	4.3	3.6	3.5	3.8	3.2	3.4
	Jun	4.6	4.7	4.4	3.6	3.5	3.7	3.1	3.2
	Jul	4.7	4.7	4.6	3.8	3.7	4.0	3.2	3.4
	Aug	4.7	4.7	4.6	3.8	3.7	3.9	3.2	3.3
	Sep	4.7	4.8	4.5	3.8	3.7	3.9	3.1	3.2
	Oct	4.8	4.9	4.6	3.8	3.8	3.9	3.1	3.1
	Nov	4.7	4.8	4.6	3.8	3.7	4.0	3.0	3.1
	Dec	4.9	5.0	4.8	4.0	3.9	4.0	3.1	3.1
2008	Jan	4.9	5.1	4.7	3.9	4.0	3.9	3.2	3.2
	Feb	4.8	4.9	4.7	3.9	3.9	4.0	3.2	3.2
	Mar	5.1	5.2	5.0	4.2	4.2	4.2	3.4	3.3
	Apr	5.0	5.2	4.8	4.2	4.3	4.1	3.1	3.0
	May	5.5	5.7	5.3	4.5	4.5	4.4	3.3	3.5
	Jun	5.6	5.9	5.3	4.6	4.7	4.5	3.4	3.5
	Jul	5.8	6.2	5.3	4.7	5.0	4.4	3.7	3.8
	Aug	6.2	6.4	5.9	5.2	5.3	5.1	4.1	4.3
	Sep	6.2	6.8	5.5	5.3	5.8	4.6	4.2	4.5
	Oct	6.6	7.2	5.9	5.5	5.8	5.2	4.6	4.7
	Nov	6.8	7.4	6.1	5.8	6.1	5.4	4.8	5.1
	Dec	7.2	7.9	6.4	6.3	6.7	5.7	4.9	5.1
2009	Jan	7.6	8.3	6.7	6.7	7.3	6.0	5.2	5.3
	Feb	8.1	8.8	7.3	7.2	7.9	6.4	5.6	6.0
	Mar	8.5	9.5	7.5	7.6	8.3	6.7	6.2	6.3
	Apr	8.9	10.0	7.6	7.8	8.8	6.7	6.4	6.7
	May	9.4	10.5	8.0	8.4	9.5	7.2	6.7	7.0
	June	9.5	10.6	8.3	8.5	9.5	7.2	7.0	7.7
	July	9.4	10.5	8.1	8.4	9.5	7.1	6.7	7.4
	August	9.7	10.9	8.2	8.7	10.0	7.2	6.8	7.5

Source: Bureau of Labor Statistics (2009).

Note: The unemployment rate is the number of adults who are out of work and who looked for work at some point over the past four weeks, divided by the number of adults in the labor force (employed and unemployed). The shaded area indicates recessionary months, as determined by the National Bureau of Economic Research.

* The Bureau of Labor Statistics does not seasonally adjust unemployment rates for women age 55 and older.

Monthly Unemployment Rates, by Sex and Education, Age 55+, November 2007 to July 2009 (%)
(not seasonally adjusted)

Year	Month	Not High School Graduate			High School Graduate			Some College			4 or More Years of College		
		All	Men	Women	All	Men	Women	All	Men	Women	All	Men	Women
2007	Nov	4.8	4.0	6.0	3.0	3.5	2.6	2.9	3.1	2.8	2.3	2.2	2.4
	Dec	4.9	5.7	3.8	2.9	3.4	2.5	3.8	3.5	4.0	2.3	2.5	1.9
2008	Jan	6.1	6.1	5.9	3.8	4.3	3.3	4.2	4.2	4.2	2.4	2.7	2.0
	Feb	5.4	5.7	5.0	3.6	4.1	3.2	3.7	3.5	3.9	2.7	2.9	2.5
	Mar	6.2	6.1	6.2	3.8	4.6	3.1	3.6	3.4	3.8	2.7	2.8	2.5
	Apr	3.8	3.6	4.0	3.0	3.5	2.5	3.6	3.7	3.5	2.1	1.9	2.3
	May	4.7	4.8	4.5	2.8	3.4	2.2	3.4	3.8	3.0	2.5	2.4	2.7
	Jun	5.3	5.8	4.7	3.1	2.9	3.3	3.5	3.5	3.6	2.7	2.3	3.1
	Jul	5.5	5.9	4.8	3.8	3.4	4.3	4.1	4.3	3.9	3.5	2.9	4.5
	Aug	6.3	6.6	5.9	4.5	3.6	5.3	4.2	4.2	4.1	3.5	3.4	3.7
	Sep	5.8	6.6	4.8	4.2	4.3	4.1	4.5	4.2	4.7	3.1	3.4	2.8
	Oct	7.0	5.6	8.8	4.2	4.4	4.0	4.2	3.7	4.7	3.7	4.1	3.1
	Nov	7.4	7.6	7.2	5.0	5.8	4.2	4.7	4.7	4.7	3.5	3.7	3.3
	Dec	8.3	10.3	5.4	5.3	6.6	4.0	5.0	5.1	4.9	3.7	3.6	3.9
2009	Jan	10.3	11.4	8.9	6.2	7.1	5.2	6.2	7.0	5.5	4.5	4.4	4.6
	Feb	9.8	10.2	9.4	7.1	8.8	5.4	6.4	7.1	5.7	4.2	4.4	4.0
	Mar	11.6	13.5	9.0	7.4	9.0	5.9	7.2	7.9	6.5	4.2	4.3	4.2
	Apr	9.3	11.0	6.8	6.8	8.5	5.3	7.1	7.6	6.6	4.3	4.3	4.3
	May	11.5	11.9	11.0	6.6	8.3	5.1	6.7	6.9	6.4	4.4	4.2	4.7
	June	11.5	11.7	11.2	7.3	8.2	6.5	7.5	7.9	7.1	4.8	4.9	4.6
	July	10.8	10.4	11.4	7.6	8.1	7.1	7.6	7.5	7.7	5.8	5.8	5.8

Source: Urban Institute Retirement Policy Program estimates from the Current Population Survey.

Note: The unemployment rate is the number of adults who are out of work and who looked for work at some point over the past four weeks, divided by the number of adults in the labor force (employed and unemployed). The recession began in December 2007, according to the National Bureau of Economic Research.

Monthly Unemployment Rates, by Sex and Race and Ethnicity, Age 55+, November 2007 to July 2009 (%)
(not seasonally adjusted)

Year	Month	Non-Hispanic White			Non-Hispanic Black			Hispanic		
		All	Men	Women	All	Men	Women	All	Men	Women
2007	Nov	2.6	2.7	2.4	4.1	4.8	3.6	4.7	3.7	6.0
	Dec	2.9	3.2	2.5	3.8	3.1	4.3	4.5	4.4	4.5
2008	Jan	3.2	3.4	2.9	4.6	5.3	4.1	5.7	5.6	5.9
	Feb	3.2	3.2	3.3	4.7	5.4	4.2	4.6	5.5	3.4
	Mar	3.1	3.2	2.8	6.0	6.8	5.4	5.5	6.1	4.6
	Apr	2.5	2.5	2.3	6.1	6.2	6.0	3.5	3.5	3.5
	May	2.6	2.9	2.3	7.0	8.2	5.9	3.5	3.4	3.7
	Jun	2.8	2.6	3.1	5.3	6.2	4.4	5.3	4.9	5.7
	Jul	3.6	3.2	4.1	7.0	8.9	5.3	4.2	3.1	5.6
	Aug	3.9	3.3	4.5	6.5	7.9	5.4	5.4	6.2	4.4
	Sep	3.6	3.6	3.7	7.5	8.2	6.8	5.0	5.9	3.9
	Oct	3.7	3.6	3.8	8.0	9.5	6.8	6.4	5.9	7.1
	Nov	4.0	4.2	3.8	7.7	10.2	5.6	7.0	7.7	6.2
	Dec	4.4	4.8	4.0	7.1	8.6	5.8	7.7	9.0	6.0
2009	Jan	5.4	5.9	4.9	8.9	9.6	8.4	8.2	9.1	7.0
	Feb	5.7	6.4	5.0	7.3	8.6	6.2	9.0	9.6	8.1
	Mar	6.1	6.8	5.2	7.6	8.5	6.8	10.6	11.2	9.9
	Apr	5.8	6.4	5.1	7.4	10.1	5.0	7.8	7.5	8.2
	May	5.7	5.9	5.4	7.4	9.7	5.5	10.7	11.4	9.9
	June	6.1	6.3	6.0	8	11	5.6	11.3	11.0	11.7
	July	6.4	6.4	6.5	8.1	8.9	7.5	12.6	13.2	11.8

Source: Urban Institute Retirement Policy Program estimates from the Current Population Survey.

Note: The unemployment rate is the number of adults who are out of work and who looked for work at some point over the past four weeks, divided by the number of adults in the labor force (employed and unemployed). The recession began in December 2007, according to the National Bureau of Economic Research.